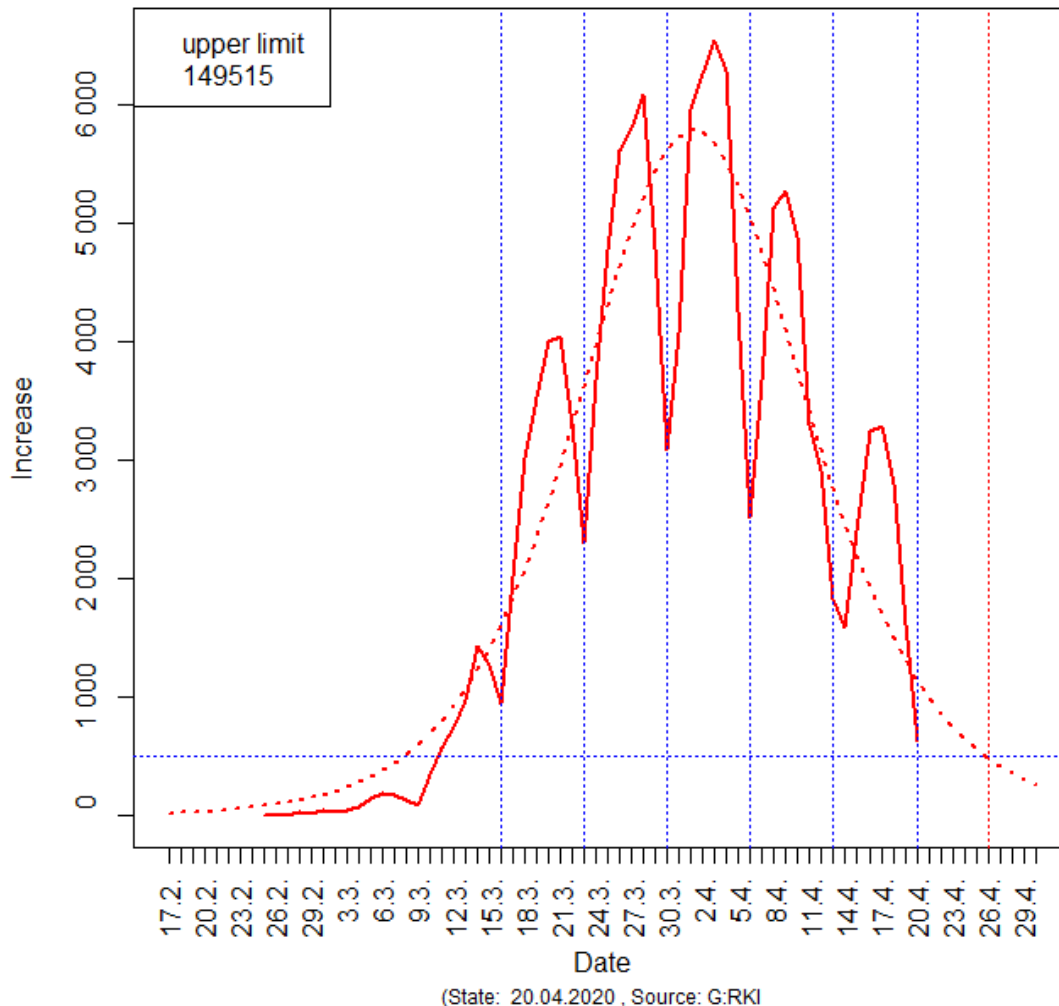


**20.04.2020: COVID-19 Pandemic: Germany: Stagnation predicted for 26.4.;**  
**estimated upper limit now around 150 000**

**Daily increase of no. of infected people for Germany**



The figure shows the real (bold line) and predicted (dotted line) increases of COVID-19 infections for **Germany**, real increases as reported by the Robert-Koch-Institut (RKI, Berlin) at the 20.4., predictions as generated by an optimally fitted **weighted Logistic Model**, putting more weight on the forth, third and second last observation. Vertical blue dotted lines indicate Mondays, the red vertical dotted line the predicted start of **stagnation** of new infections (< 500). The horizontal dotted line indicates an increase of 500.

The representation of increases shows that the numbers reported by the RKI follow waves related to weekdays. Obviously, numbers are relatively the lowest at Mondays (with the exception of the week after Easter where Monday is a public holiday). The public health authorities obviously do not report cases that much for weekends. Moreover, increases tend to get smaller. However, since the model mostly underestimates increases, possibly because of the waves, our results might be somewhat optimistic.

**Stagnation** (< 500 new infections) we now predict for the 26.4. for Germany (and for the beginning of May for Italy). The estimated upper limit of the no. of infected people in the first wave of the pandemic is now around 150000 for Germany (and higher than 190000 for Italy).